

Aftermarket Products & Services

Committed to Maximizing the Return of Your Investment

- Global Support and Services
- Spare Parts and Precision Tooling
- Machine Modernization and Upgrades
- Training and Services

Our Pledge of Commitment

Each team member of Aftermarket Products and Services has made a pledge to make a positive difference in your operations. By focusing on serving the needs of our customers after the sale, our relationships will be strengthened and innovative services can be developed for the future.



Global Support and Services

Micro-Poise® Measurement Systems serves the tire and automotive industries with the most complete line of uniformity machines, dynamic balancers, geometry measurement systems, and X-Ray equipment. To protect and maintain your investment, Micro-Poise® has established a global Aftermarket Products and Services network that is unsurpassed in the industry.

Responsive to Customer Needs

Manufacturers need more than just a service supplier. They need a highly trained, Service Solution Provider. Look to Micro-Poise® to minimize maintenance downtime and institute preventative service programs.

- Start-Up and Testing Services
- Training Program and Services
- Preventive/Predictive Maintenance Programs
- Global Repair Services
- Spare Parts and Precision Tooling
- Machine Modernization and Upgrades
- Consulting and Optimization Services
- 24-Hour Call Center

With our responsive and knowledgeable Aftermarket Products and Services group, we ensure that our customers receive the highest quality replacement products, services and technical support. You need the most highly trained and experienced staff in the market today.

Your service needs are a priority at Micro-Poise®. We are dedicated to adding value to your operations by creating unique partnerships that provide customized solutions. Understanding the dynamics of your operations enables our team to make a positive difference.

Complete Aftermarket Product and Services Portfolio

Who better to support your needs than the original equipment manufacturer? Whether you operate Akron Standard®, Micro-Poise®, TGIS FS, Coll-Tech or any other brand of measurement equipment, the Aftermarket Product and Services group will exceed your expectations for cost savings, performance and reliability.

Exceptional Customer Service Pledge

It is a critical element required to add value to our customer's business.

We are a global customer service provider, partnering with our customers to meet their on-going uptime, quality and reliability goals.

Our dedicated and professional team provides world class support.

Call Toll Free at: +1-800-428-3812 (US)

or +1-330-541-9100

www.micropoise.com





Spare Parts and Precision Tooling

Micro-Poise® carries an extensive inventory of critical spare parts to ensure your up-time and delivery goals are achieved.

- Global Inventory
- Original spare parts supplied by Micro-Poise® are delivered quickly and reliably - often overnight
- Our team can be reached 24-hours a day, 7-days a week via our Call Center telephone line at 1-800-428-3812 (US) or +1-330-541-9100

We can assist with:

- Ordering parts with our user-friendly order processing system
- Maximize up-time by providing comprehensive spare part lists for all machines
- Committed inventory programs based on your maintenance requirements

Micro-Poise® offers a variety of precision tooling options based on your machine and product range.

- Tooling specialists will assist you in finding proper tooling for your application with superior results
- Metallurgical recommendation based on environment
- Extremely tight tolerances to make our tooling the “Best in Market” - better repeatability and more accurate readings
- Exceptional manufacturing and engineering services to provide tooling for all ranges of Micro-Poise® and other brands of Balance and Uniformity systems



AkroLUBE II

Products of Focus

As part of the Spare Parts and Tooling Services, we offer products and services to meet all of your needs.

- Loadwheels
- Precision Rims and Adapters
- Calibration Master Assembly
- Multi-Jaw Tooling
- AkroLUBE II Tire Bead Lubricant
- Tooling Cleaner
- Geometry and Grinding Sensors
- Servo Drives and Motors
- Wool Sleeve Replacement
- Tire Testing Services
- X-Ray Tubes and Detectors
- Marking Foil
- Load Cells
- D70 Chuck Components
- Replacement Belts, Drums and Bearings
- Refurbished or Replacement Balance Units



Machine Modernization and Upgrades

You've made a significant investment in your final finish department to guarantee the best quality to your customer. Our goal is to help you protect and maximize the return of this investment. Machine Modernization Solutions can be implemented through Upgrade Kits installed in your plant.

Cycle Time Reduction

- Modern Drives and Controls
- Hydraulic Upgrades
- Machine Optimization Tuning

Process Automation

- Bar Code Reading for Data Traceability and Automatic Machine Set-up
- Automatic Adjustable Width Chuck
- Automated Rim Change

Increased Machine Utilization

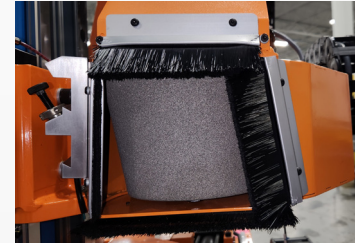
- Conveyor Upgrades to Process a Wider Range of Tires
- Tire Grinding to Increase Production Yield
- AkroMARK™ PLUS for up to 256 Marking Combinations

New Measurement Capability

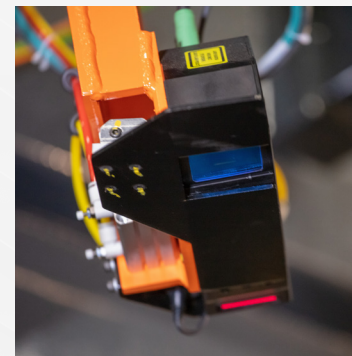
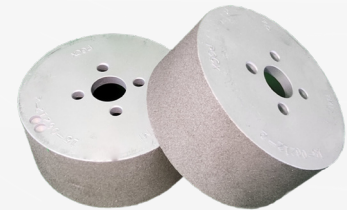
- TGIS FS for Complete Geometry Inspection
- TGIS FS Decoration and Lettering Removal (DLR) Software
- Reference Results to a Specific Point of Construction - "Angular Referencing"
- Coll-Tech X-Ray Automatic Defect Recognition (ADR) Software
- Data Visualization Tools

Obsolescence Protection

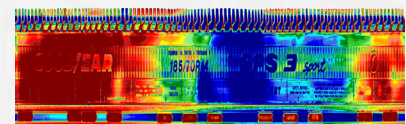
- Machine Controllers
- X-Ray Detectors
- Component Upgrade Paths
- Drives & Motors
- PLCs & Input Output Devices
- Instrumentation
- Human Machine Interfaces & Touchscreen Monitors
- Software
- Barcode Readers



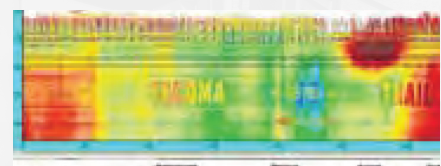
Grinder & Grinding Stones



TGIS FS Geometry Inspection



TGIS FS Sidewall View





Upgrade Kits

Machine modernization upgrade kits can be implemented in a time phased sequence. Key benefits of these in-plant upgrades include:

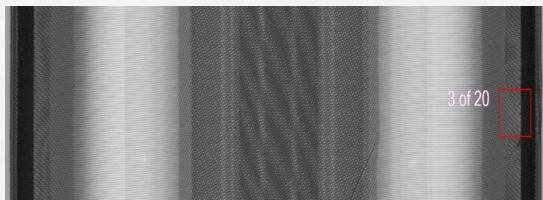
- Introducing advancements in technology
- Budgetary flexibility
- Adapting installation to meet project schedules
- Maintaining a common machine platform
- Utilizing existing plant maintenance and operational expertise

Modernization Solutions

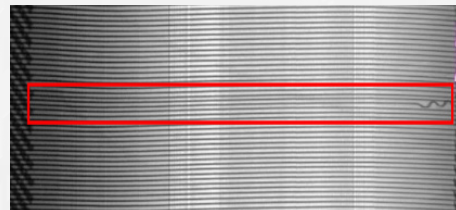
Designed to support our major product lines

- Micro-Poise® Dynamic Balance Machines - AkroDYNE® FX, AkroDYNE®, AIT-238, ATW, VTW, AkroDYNE® FXT, AkroDYNE® Truck
- Micro-Poise® Uniformity Machines - ASTEC® FX, ASTEC®, D70, D90 and FD90
- Geometry Measurement Systems - TGIS FS can be implemented on Dynamic Balance and Tire Uniformity Systems
- Coll-Tech X-Ray Systems- CTXS Plus, VerTiX

Micro-Poise® provides a full complement of parts and services for Coll-Tech high precision X-Ray test and measurement equipment. All Micro-Poise® part stocking locations maintain stock of critical X-Ray machinery components. Upgrades for all Coll-Tech X-Ray equipment and third party X-Ray machinery are available.



X-Ray Automatic Defect Recognition Side
Wall Profiler



Ply Cord

This includes the Coll-Tech X-Ray Automatic Defect Recognition (ADR) Software, the industry's standard for real time X-Ray analysis and defect recognition. Coll-Tech X-Ray ADR is offered exclusively through Micro-Poise®.



Training and Services

Installation and Commissioning Services

Expediting the machine start-up process and expert employee training are keys to maximizing the return of your investment.

- We install and commission upon delivery to your facility
- Once commissioned, our Field Service Team will thoroughly train your employees on proper operation and maintenance guidelines for maximized performance and reliability of results in the shortest amount of time
- We develop the training criteria to specifically meet each customer's unique production requirements

Relocation Services

Micro-Poise offers essential relocation services for businesses needing to move final finish test and measurement equipment. These services are crucial for companies looking to expand, downsize, or optimize operations without disrupting productivity.

- The relocation process begins with one of our service technicians visiting the site in advance to inspect and create a checklist of the tools and equipment needed to dismantle the machine. This checklist is then provided to the customer to ensure they are prepared for the machine teardown.
- On the day of the relocation, our service technician will supervise the preparation of the machine for shipment, including securing load cells and installing required shipping brackets to lock the loadwheel, tooling, and spindle to prevent movement during transit. Additionally, a baseline of the machine will be performed, and machine controller/PLC backups will be completed. Upon arrival at the new site, the machinery is reinstalled following our standard start-up and commissioning procedures.
- We can also provide recommendations for packaging and transportation specialists to ensure a smooth relocation process.



Tire Testing Services

Do you have excess tires that require testing? Do you have a tire testing project but lack available machine capacity? Do you have a tire quality issue or a tire recall that requires uniformity, dynamic balance or geometry testing?

Micro-Poise® can assist you in your final finish testing needs by providing independent tire testing services. By testing tires at our controlled facility in Streetsboro, Ohio, USA, you can avoid a costly bottleneck at your production plant. Overseas shipping costs may also be avoided by having these tests performed at our location.

- Tire Uniformity Testing
- Geometry Inspection - bulge, depression, lateral and radial run-out
- Dynamic Balance Testing - static and couple imbalance

Training Programs and Service

- As part of our commitment to our customer base, continuing training services are offered at your facility for hands-on, real world instruction
- Conducted by experienced Micro-Poise® professionals, on-site training courses are available and range from 1-5 days for completion.
- These insightful classes are an invaluable tool to maintaining the performance levels of your equipment.
- Training can also be arranged at our Micro-Poise® Headquarters in Streetsboro, Ohio, USA or any of our training centers.



Consulting and Optimizing Services

Often times, our customers require on-site consulting or evaluation services to determine the best technical solution to optimize your equipment's performance.

- Specialized technicians and engineers can provide invaluable feedback with our hands-on approach
- Development of manufacturing solutions and site surveys reduce critical downtime
- We suggest strategies for existing equipment, new equipment or production improvements
- Cycle time optimization
- Complete evaluation of current and future needs



24-Hour Call Center

By calling our 24-Hour Call Center at +1-800-428-3812 (US) or +1-330-541-9100, customers can receive support and information for the following areas:

- Purchase parts
- Technical support
- Customer service

Contact your local sales representative or visit our website for additional information on these areas:

- Machine modernization and upgrades
- Order entry
- Training classes and scheduling

Extended Service Program

Fully trained Micro-Poise® service technicians are available for extended work at your facility. Through this program, you can schedule additional resources directly from Micro-Poise® to support preventative and predictive maintenance, shutdown and startup assistance, or retooling requirements for your manufacturing facility.

Global Repair Services

Micro-Poise® has more than 40 service specialists world-wide to fulfill your repair service needs.

- On-call technical service desk support for over-the phone diagnostics and consultation
- Fast on-site technician visits to your facility for expert repair service reduces critical downtime
- Responsive and knowledgeable network of repair technicians repair all makes/models of uniformity machines, dynamic balancers, geometry measurement systems and X-Ray equipment
- Original equipment manufacturer experience allows us to quickly and effectively repair your equipment in the fastest time possible



Aftermarket Products & Services

To protect and maximize the return of your investment, Micro-Poise® has an established global Aftermarket Products & Services network that is unsurpassed in the industry. Our responsive and knowledgeable group will exceed your expectations for cost savings, performance and reliability.

- Technical services for start-up, on-going maintenance, preventative and predictive maintenance and training
- Spare parts and precision tooling, kits and repairs
- Machine modernization and upgrades

With more than 100 years of innovation behind us,
we continue pushing leading-edge tire measurement systems forward.
Micro-Poise®. Better by every measure.

Aftermarket Services: 06/2025

MP USA

Tel: +1-330-541-9100
Fax: +1-330-541-9111

MP Europe

Tel: +49-451-89096-0
Fax: +49-451-89096-24

MP Korea

Tel: +82-31-888-5259
Fax: +82-31-888-5228

MP China

Tel: +86-20-8363-4768 Ext 108
Fax: +86-20-8363-3701

MP India

Tel: +91-44-6699-5700
Fax: +91-44-6699-5721